

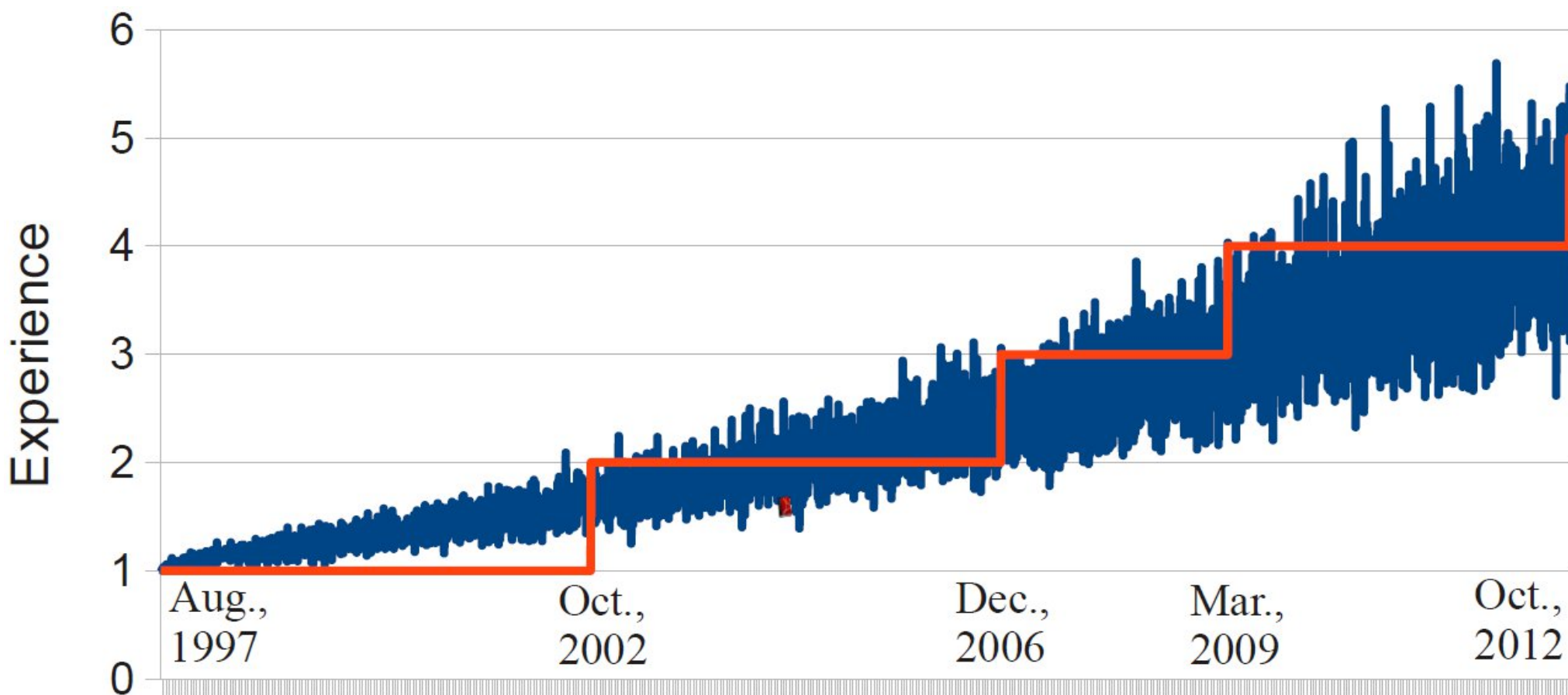
# Continuous Experience-aware Language Model

Subhabrata Mukherjee<sup>†</sup>, Stephan Günemann<sup>‡</sup>, Gerhard Weikum<sup>†</sup>  
<sup>†</sup>MPI Informatik, <sup>‡</sup>TU Munich

# Experience-aware Item Recommendation

- Use-case:
  - i) *Identify* experienced users
  - ii) *Recommend* item based on user's maturity to consume it
- “My first DSLR. Excellent camera, take great pictures with high definition, without a doubt it makes honor to its name.” (5)
- “The EF 75-300 mm lens is only good to be used outside. The 2.2X HD lens can only be used for specific items; filters are useless if ISO, AP,... are correct. The short 18-55mm lens is cheap and should have a hood to keep light off lens.” (3)

# Continuous Experience Evolution

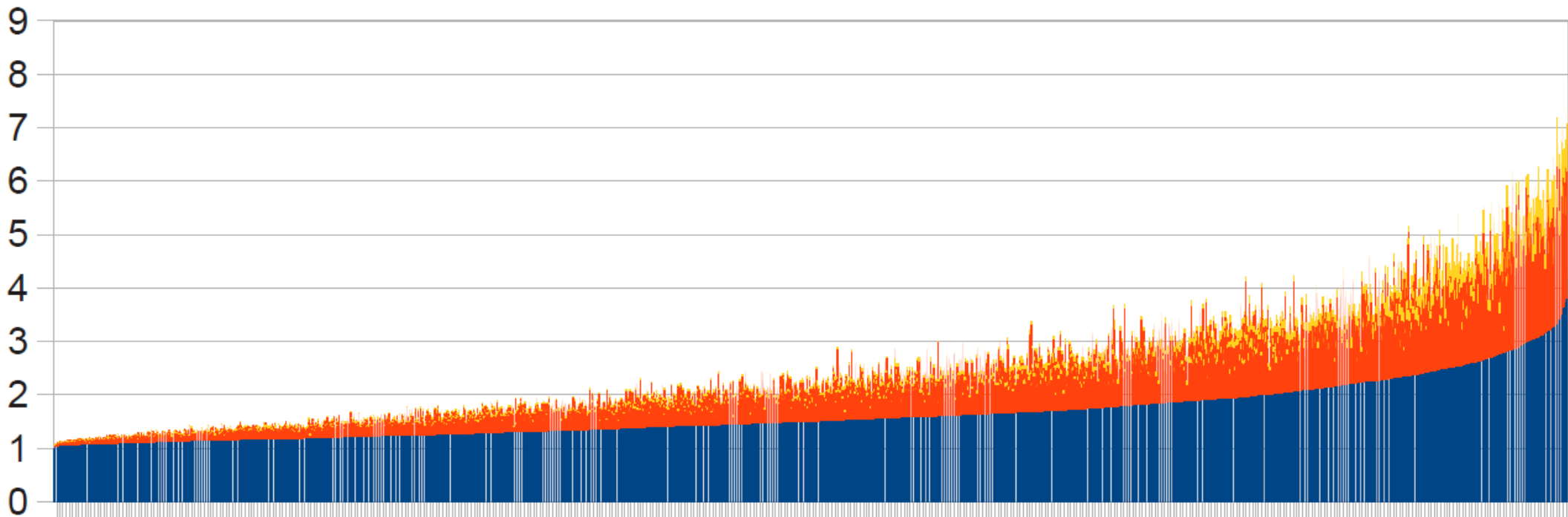


— Continuous version (GBM) — Discrete version (HMM)

GBM: Geometric Brownian Motion

HMM: Hidden Markov Model

# Variation of Experience with Mean and Variance of GBM Trajectory



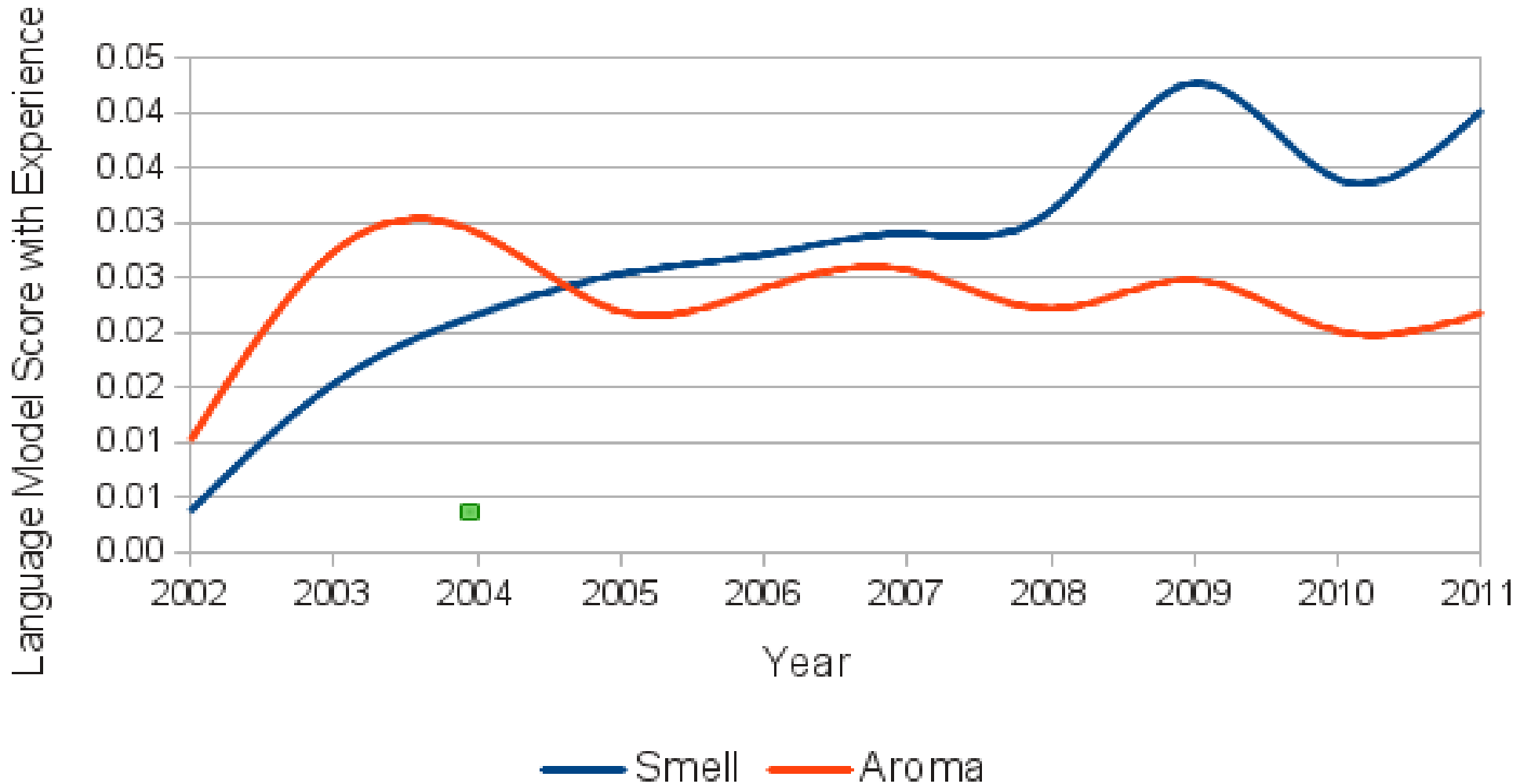
Users sorted by Experience

■ Experience ■ Log(Mean) ■ Scaled Variance

# Continuous Language Model

- Language model (LM) of users change with their (continuous) experience evolution
- Making LM *continuous* is tricky, as words have to be generated from *discrete* Multinomial
- Temporal granularity: LM does not evolve at the same resolution as experience does
- We model these using Brownian Motion

# Trace Evolving Norms and Conventions in Community



# Top Words by Experienced Users

Most Experience	Least Experience
<b>BeerAdvocate</b> chestnut_hued near_viscous rampant_perhaps faux_foreign cherry_wood sweet_burning bright_crystal faint_vanilla boned_dryness woody_herbal citrus_hops mouthfeel	originally flavor color didnt fa- vorite dominated cheers tasted re- view doesnt drank version poured pleasant bad bitter sweet
<b>Amazon</b> aficionados minimalist underwritten theatri- cally unbridled seamless retrospect overdra- matic diabolical recreated notwithstanding oblivious featurettes precocious	viewer entertainment battle actress tells emotional supporting evil nice strong sex style fine hero romantic direction superb living story
<b>Yelp</b> rex foie smoked marinated savory signature contemporary selections bacchanal delicate grits gourmet texture exotic balsamic	mexican chicken salad love better eat atmosphere sandwich local dont spot day friendly order sit
<b>NewsTrust</b> health actions cuts medicare oil climate major jobs house vote congressional spending unem- ployment citizens events	bad god religion iraq responsibility questions clear jon led meaningful lives california powerful

# Find resources online:

- Paper: <http://bit.do/exp-lm-kdd16>
- Slides: <http://bit.do/exp-lm-slides-kdd16>
- Current summary slides: <http://bit.do/exp-lm-summary-kdd16>